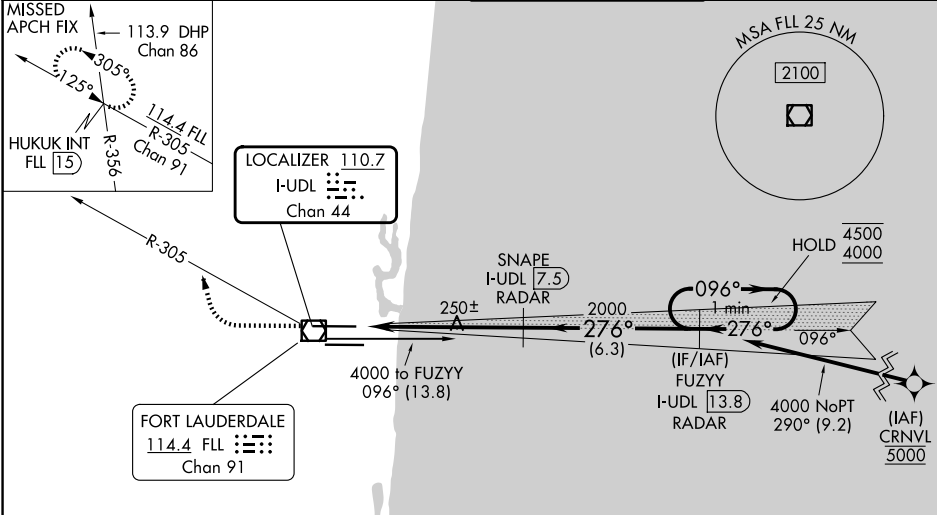


LOC/DME I-UDL 110.7 Chan 44	APP CRS 276°	Rwy Ldg TDZE Apt Elev 8394 7 65
-------------------------------------------------	------------------------	---------------------------------------------------------------------

ILS or LOC RWY 28R
FORT LAUDERDALE/HOLLYWOOD INTL (FLL)

DME or RADAR required. RNP APCH - GPS from CRNVL.	MALSR 	MISSED APPROACH: Climb to 800 then climbing right turn to 4000 on FLL VOR/DME R-305 to HUKUK INT/FLL 15 DME and hold, continue climb-in-hold to 4000.
 Simultaneous approach authorized. Inop table does not apply to S-ILS 28R. For inop ALS, increase S-LOC 28R Cats C and D visibility to 1 3/8 SM.		

D-ATIS 135.0	MIAMI APP CON 133.775 285.6	FORT LAUDERDALE TOWER 119.3 257.8	GND CON 121.4
------------------------	---------------------------------------	---------------------------------------------	-------------------------



ELEV 65 TDZE 7				
		VGSI and ILS glidepath not coincident (VGSI Angle 3.00/TCH 69). FUZZY I-UDL 13.8 RADAR		
		One Minute Holding Pattern		
		SNAPE I-UDL 7.5 RADAR		
		I-UDL 2.8		
		2000		
		276°		
		096° 4500		
		276° 4000		
		GS 3.00° TCH 49		
		1.4 NM 4.7 NM 6.3 NM		
CATEGORY	A	B	C	D
S-ILS 28R	257/40		250 (200-3/4)	
S-LOC 28R	520/24 513 (500-1/2)		520/55 513 (500-1)	
CIRCLING	680-1 615 (700-1)		800-2 800-2 1/4 735 (800-2) 735 (800-2 1/4)	

SE-3, 16 APR 2026 to 14 MAY 2026

SE-3, 16 APR 2026 to 14 MAY 2026